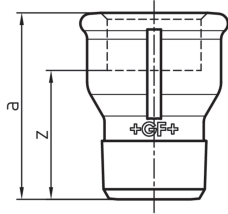


529a**Socket, internal and external thread, ISO/EN M4**

ST ... these types of fittings are made from steel (galvanised finish = electroplated) and not suitable for drinking water installations. Steel parts are hexagonal instead of beaded.

EN	Dim. (inch)	Black Code	Galvanised Code	a (mm)	s (mm)	z (mm)
ST -	¼	770 529 102	770 529 202	28	17	18
ST •	⅜	770 529 103	770 529 203	35	22	25
•	½	770 529 104	770 529 204	43		30
•	¾	770 529 105	770 529 205	48		33
•	1	770 529 106	770 529 206	55		38
-	1 ¼	770 529 107	770 529 207	60		41
-	1 ½	770 529 108	770 529 208	63		44
-	2	770 529 109	770 529 209	70		46